

CA66

Date: August 23, 1996

Ref: Ca066-0

Revision: 00

Author:

Cable code	CA66
Description	PLC Port to Mitsubishi A Series Programming Port
Type of Communication	RS-422/RS-232
Panel Connector	D-sub type 15S
PLC Connector	D-sub type 25P
Notes	

table 1. Cable description

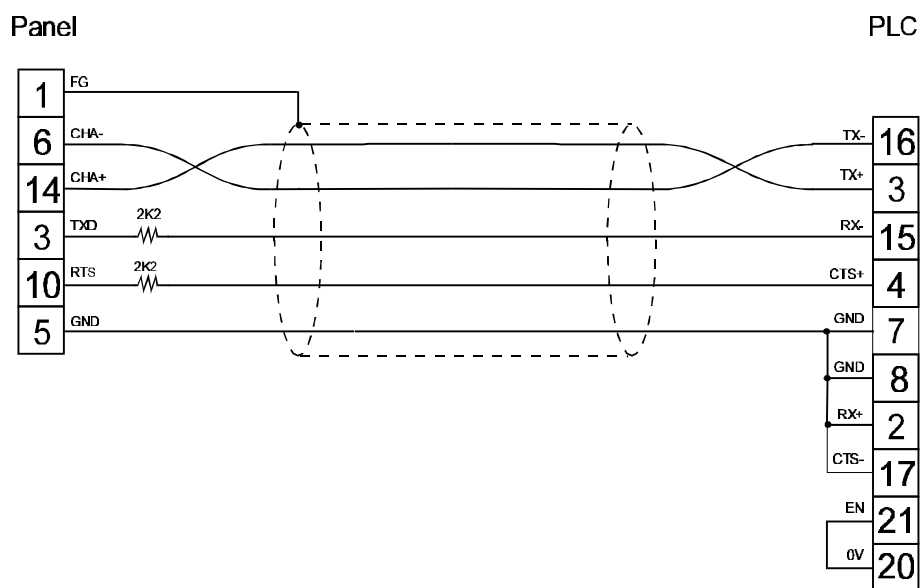


figure 1. Cable diagram