

CA195

Date: March 13, 2006

Ref: CA195-1.DOC

Revision: 01

Author: IF

Cable code	CA195
Description	PLC Port to Hitachi Micro-EH Port 2
Type of Communication	RS-485
Panel Connector	D-sub type 15S
PLC Connector	D-sub type 15P
Notes	

table 1. Cable description

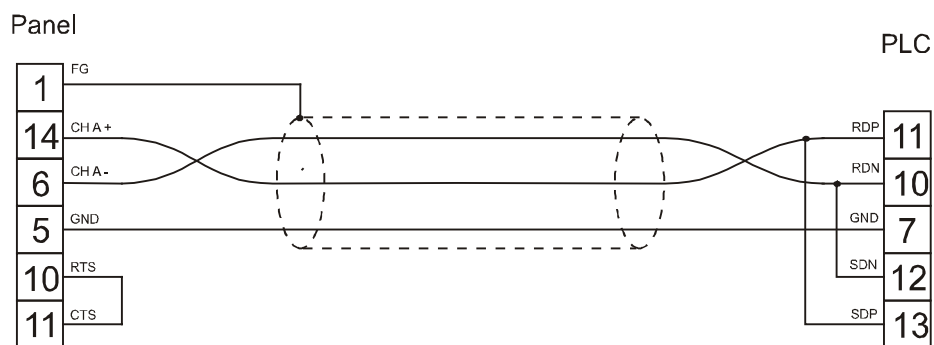


figure 1. Cable diagram