

CA221

Date: May 2, 2007
Ref: CA221-2.DOC
Revision: 02
Author: IF

Cable code	CA221
Description	PLC Port to Hitachi EH-150
Type of Communication	RS-485
Panel Connector	D-sub type 15S
PLC Connector	RJ 45
Notes	

table 1. Cable description

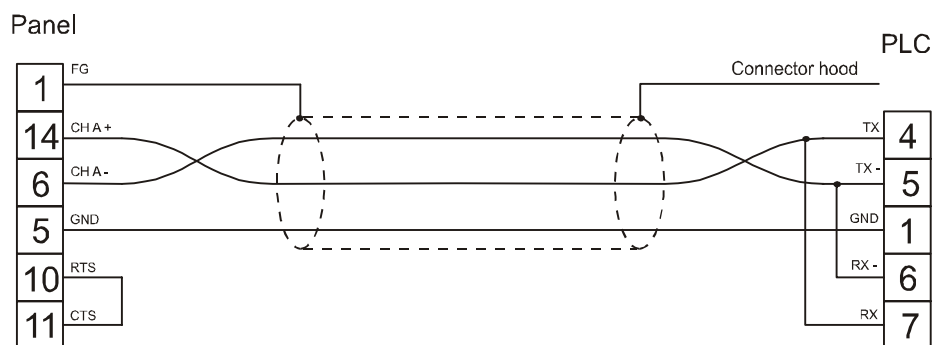


Figure 1. Cable diagram

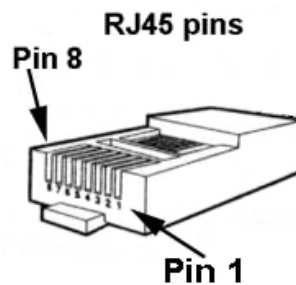


Figure 2. PLC connector