

# CA32

Date: November 30, 1999  
 Ref: CA032-1  
 Revision: 01  
 Author: SM

|                              |  |
|------------------------------|--|
| <b>Cable code</b>            | CA32   |
| <b>Description</b>           | PLC Port to MELSEC A, A1SJ71C24-R2 Module  |
| <b>Type of Communication</b> | RS-232   |
| <b>Panel Connector</b>       | DA15P  |
| <b>PLC Connector</b>         | DE9P   |
| <b>Notes</b>                 | Use with A1SJ71C24-R2 module for point to point connection.<br>Refer to TN49 for more information. |

Table 1. Cable description

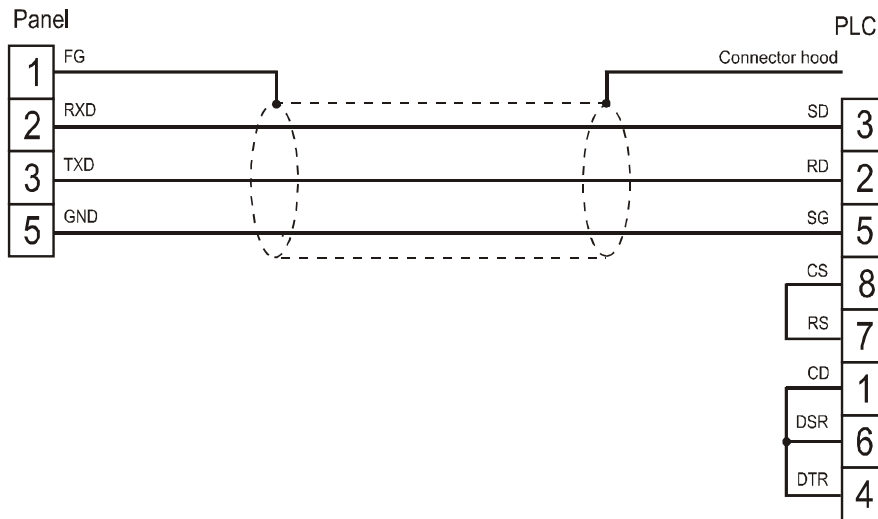


Figure 1. Cable diagram